

VEGA - SYNCHRO VEGA

Chain actuator - Force in push action 250-300 N - Maximim stroke 300 mm



PATENTED CHAIN ACTUATOR

- Highest performance in minimum size: the die-cast aluminium casing has a very small section (45 x 32 mm) and can be easily built-in into the frame of curtain walls.
- New concept double link chain completely in stainless steel.
- Chain exit in central position.
- Quick and easy installation: the manual closing position regulation is not required, avoiding possible mistake. The stop in closing position is regulated by an electronic limit switch.
- If installed on PVC windows, the profile has to be reinforced.
- Electronic stop in the intermediate positions in case of overload.
- Supplied with 1,5 m cable (VEGA) or 3 m (SYNCHRO VEGA) and pivoting brackets.
- The installation without brackets is possible for windows with pivoting hinges only if the vent height is at least 900 mm.
- The VEGA RF version has an integrated radio receiver and it is supplied with radio remote control; the transmitter controls simultaneously more actuators within its field of action; available on request actuators and remote controls with different radio codes.
- In case of vents with four-bar hinges, please contact our Technical Dept. for choosing the suitable fixing brackets.
- **RF** version available on request for some models
- **SYNCHRO VEGA** version is equipped with an integrated speed synchronization control board that allows the mounting of more than one actuator (max 4) on the same vent, avoiding the installation of an external control panel.
- **VEGA DC F-SIGNAL** and **SYNCHRO VEGA DC F-SIGNAL** are a special version with opening and closing feedback signal (free potential ,maintained contact), activated by the current limit. **SYNCHRO VEGA DC F-SIGNAL** is provided with additional cable.
- For a higher resistance against atmospheric agents, it is available on request the VEGA DC version with protection class **IP32**.



	VEGA AC	VEGA RF	VEGA RF-RAIN
VOLTAGE SUPPLY	100 Vac - 240 Vac	100 Vac - 240 Vac	100 Vac - 240 Vac
ELECTRIC CONNECTION	3 wires + earth	4 wires + earth	4 wires + earth
OPERATION			
STROKE	300 mm	300 mm	300 mm
FORCE (push and pull action)	250 N	250 N	250 N
SPEED	~ 9 mm/s	~ 9 mm/s	~ 9 mm/s
CURRENT ABSORPTION (with max load)	0,3 A - 0,15 A	0,3 A - 0,15 A	0,3 A - 0,15 A
PARALLEL CONNECTION*	YES	YES	YES
LIMIT STOP	Electronic	Electronic	Electronic
SAFETY STOP	Electronic	Electronic	Electronic
PROTECTION CLASS	IP 30	IP 30 Integrated radio receiver Radio control included	IP 30 Integrated radio receiver Direct connection at the rain sensor Radio control included

PART No.

GREY RAL 9006	40900K	40906Q	41015D
BLACK RAL 9005	40901L	40907R	41016E
WHITE RAL 9010	40902M	40908S	41017F

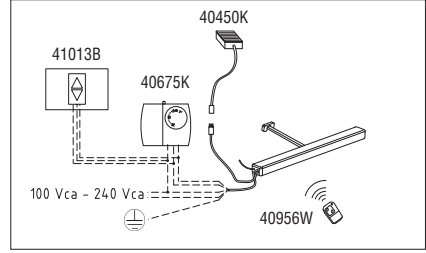
	VEGA DC	VEGA DC F-SIGNAL	SYNCHRO VEGA DC	SYNCHRO VEGA DC F-SIGNAL
VOLTAGE SUPPLY	24 Vdc ± 10%	24 Vdc ± 10%	24 Vdc ± 10%	24 Vdc ± 10%
ELECTRIC CONNECTION	2 wires	2 + 3 wires	2 + 3 wires	5 + 3 wires
OPERATION	by polarity inversion	by polarity inversion	by polarity inversion	by polarity inversion
STROKE	300 mm	300 mm	300 mm	300 mm
FORCE (push and pull action)	300 N	300 N	300 N	300 N
SPEED	~ 9 mm/s	~ 9 mm/s	~ 9 mm/s	~ 9 mm/s
CURRENT ABSORPTION (with max load)	0,7 A	0,7 A	0,7 A	0,7 A
PARALLEL CONNECTION*	YES	YES	YES	YES
LIMIT STOP	Electronic	Electronic	Electronic	Electronic
SAFETY STOP	Electronic	Electronic	Electronic	Electronic
PROTECTION CLASS	IP 30	IP 30	IP 30	IP 30

PART No.

GREY RAL 9006	40903N	41304W	41122C	41307Z
BLACK RAL 9005	40904O	41305X	41123D	41308A
WHITE RAL 9010	40905P	41306Y	41124E	41309B

* Only the same model of VEGA actuator can be connected in parallel (VEGA RF can be connected in parallel with VEGA RF-RAIN)

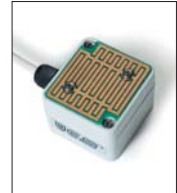
VEGA - SYNCHRO VEGA



For a more detailed wiring layout see the manual of instructions



Radio control supplied with VEGA RF and VEGA RF-RAIN part No. 40956W



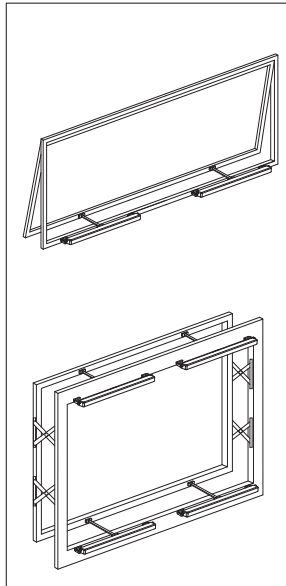
Rain sensor RS part No. 40450K

VEGA RF / RF-RAIN

The VEGA RF and RF-RAIN models are controlled by a radio transmitter (frequency 433,92 MHz) and are predisposed for the direct connection at a thermostat without any control panel.

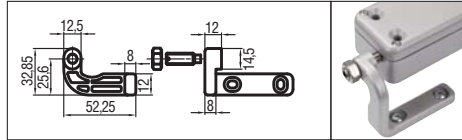
VEGA RF-RAIN version is supplied with cable for direct connection to a rain sensor (rain sensor not included).

It is possible to order VEGA RF actuator without radio control and the radio control separately (it is possible to control more actuators with the same radio transmitter). Available on request actuators + remote control with different radio codes.

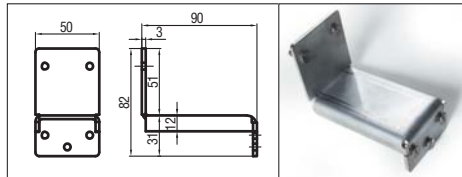


Synchro Vega installation example

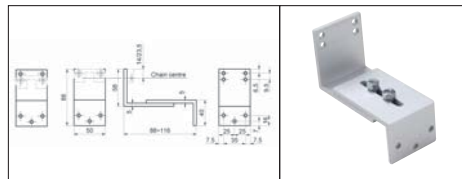
Accessories



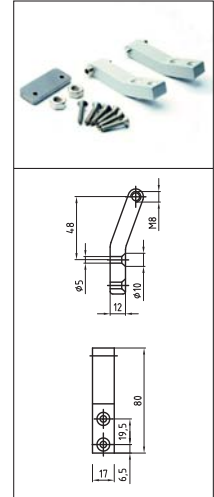
Pivoting brackets kit (included)



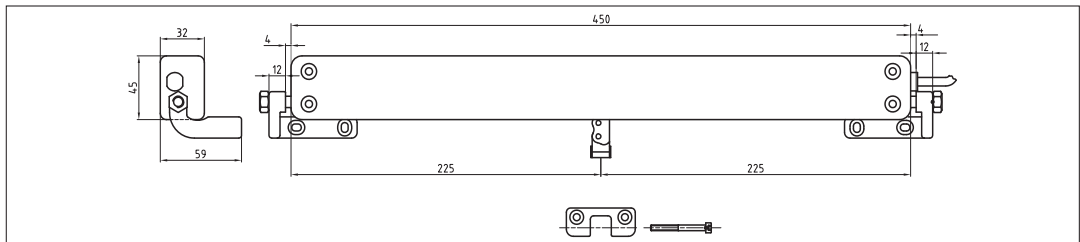
Stainless steel bottom hinged window bracket part No. 40858U



Aluminium adjustable "Z" bracket for bottom hinged window part No.41200C

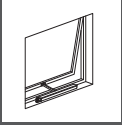


Long brackets kit (to be ordered separately)
 GREY RAL 9006 part No. 40941H
 BLACK RAL 9005 part No. 40942I
 WHITE RAL 9010 part No. 40943J

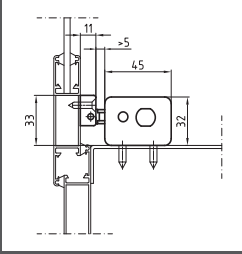


Actuator dimensions

Installation examples



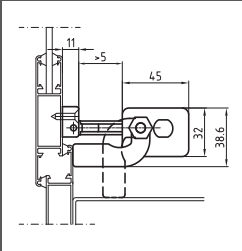
Top hinged windows



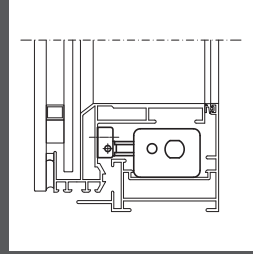
On windows with windowsill



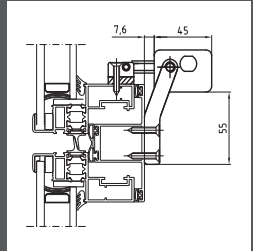
Top hinged roof windows



On windows with and without windowsill with pivoting brackets kit included



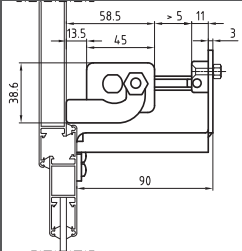
Inside a curtain wall frame



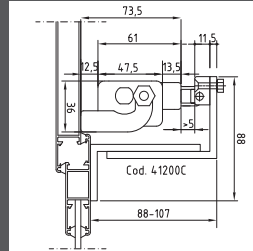
With long brackets kit



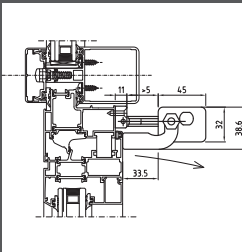
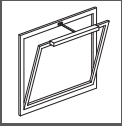
Bottom hinged windows



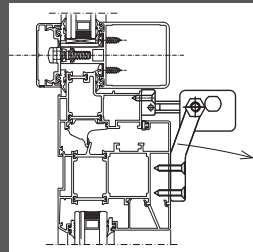
On the frame with pivoting brackets kit and bracket for bottom hinged windows part No. 40858U



On the frame with adjustable "Z" bracket part No.41200C



On the vent with pivoting brackets kit included



On the vent with long brackets kit

SPECIFICATION PROSPECTS

Electric chain actuator Ultraflex Control Systems named Vega with double link chain completely in stainless steel.


Voltage supply: from 100 to 240 Vac or 24 Vdc – Electronic limit stop; electronic stop in the intermediate positions in case of overload. Casing in painted die-cast aluminium with very small section (45x32 mm). Pivoting brackets included.

The 100-240 Vac version and the 24 Vdc version are conform to 2004/108/CE directives, the 100-240 Vac version is conform also to 2006/95/CE directive.

Electric chain actuator Ultraflex Control Systems named Synchro-Vega with double link chain completely in stainless steel. Suitable for mounting more than one actuators (max 4 actuators) on the same vent.

Voltage supply: 24 Vdc – Electronic limit stop; speed control; electronic stop in the intermediate positions in case of overload. Casing in painted die-cast aluminium with very small section (45x32 mm). Pivoting brackets included.

It is conform to 2004/108/CE directive.

 The instructions for a safe installation are included in the section "SECURITY WARNINGS"